

# HPLC Inlet Filter



**Universal Instrument's** is a leading professional manufacturer and supplier of Solvent Inlet Filters, designed for High-Performance Liquid Chromatography (HPLC). With meticulous craftsmanship, our filters are created using premium 316L sintered stainless steel, ensuring the highest levels of quality and durability. We offer a diverse range of filter sizes for both inside and outside tubing to meet the specific needs of our customers.



Some Key Features of our Solvent Inlet Filters You Can Check as Following:

1. **High-quality Material:** Made from high-quality 316L sintered stainless steel, our solvent inlet filters are built to last, offering excellent resistance to corrosion and chemical damage.
2. **Versatility:** Available in a variety of sizes for both inside and outside tubing, our filters are adaptable to meet the requirements of different HPLC systems.
3. **Exceptional Filtration:** Engineered to offer superior filtration efficiency, our filters prevent particulates and contaminants from reaching critical HPLC components, enhancing the lifespan of your system and ensuring accurate and reproducible results.
4. **Durable and Reliable:** Our inlet filters are robustly designed to withstand the high pressures associated with HPLC operations, ensuring long-lasting and reliable performance.

## Universal Instruments

An ISO 9001:2015 Certified Laboratory

Plot No. 362, HAL Colony, Gajularamaram, Shapur Nagar,  
Medchal - Malkajgiri, Hyderabad - 500 055, Telangana, INDIA,  
Ph : +91 9392505165, 91773 32324, 7993044511

E-mail : [universalinstruments9@gmail.com](mailto:universalinstruments9@gmail.com)

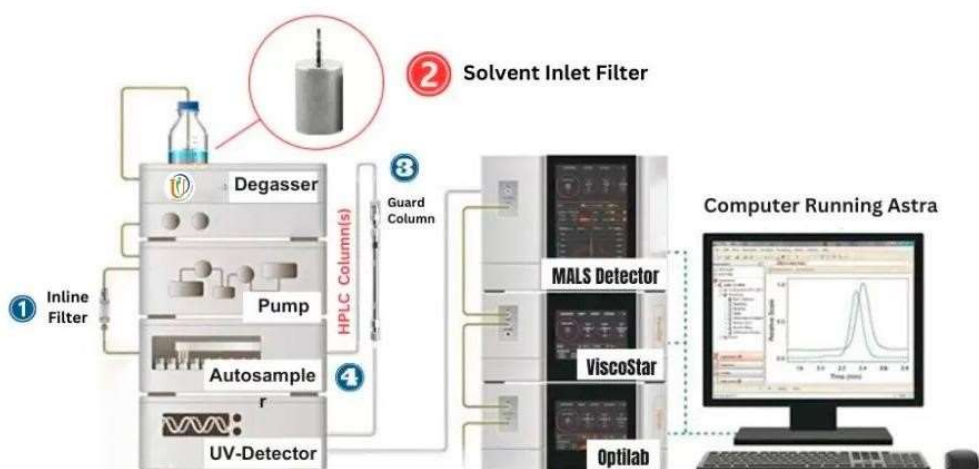
Visit us at [www.uinst.net](http://www.uinst.net)



5. **Easy Maintenance:** Designed with user convenience in mind, our filters are simple to clean and maintain, helping your laboratory operations run smoothly and efficiently.
6. **Universal Solutions:** As an UI factory, we offer custom solutions to perfectly meet your specific needs and preferences.
7. **Large surface area** and bubble-free filtration at the bottom.
8. **Many Pore Size Option:** Available in 2 $\mu$ m, 5 $\mu$ m, 10 $\mu$ m, and 20 $\mu$ m inlet solvent filters. makes us an ideal choice for laboratory and analytical professionals worldwide.

Choosing **Universal Instrument's** Solvent Inlet Filters ensures the protection of your HPLC system and the accuracy of your analytical results. Our commitment to quality, performance, and customer satisfaction

## Solvent Inlet Filter



Our filters ensure reliable and efficient HPLC performance and are easy to install and maintain. Our experienced team offers exceptional customer service and customizable solutions tailored to your needs. Trust **Universal Instrument's** as your reliable supplier with 10 years of experience in providing top-quality products compatible with a wide range of solvents.

## Universal Instruments

An ISO 9001:2015 Certified Laboratory

For Any Enquiries

Contact Us :

Ph : +91 9392505165, 9966992881, 7993044511

E- mail : [universalinstruments9@gmail.com](mailto:universalinstruments9@gmail.com)

